

MACHEREY-NAGEL

Ready-to-use: Nucleic acid extraction made easy!



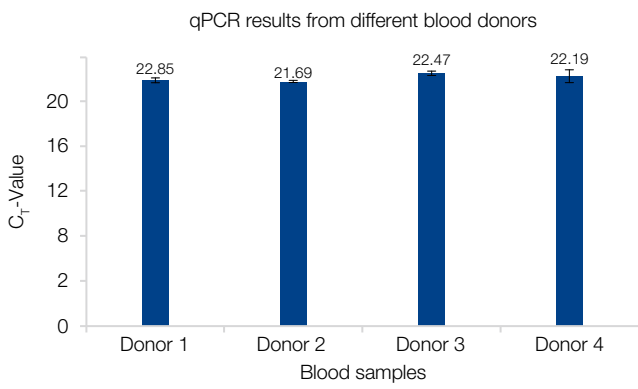
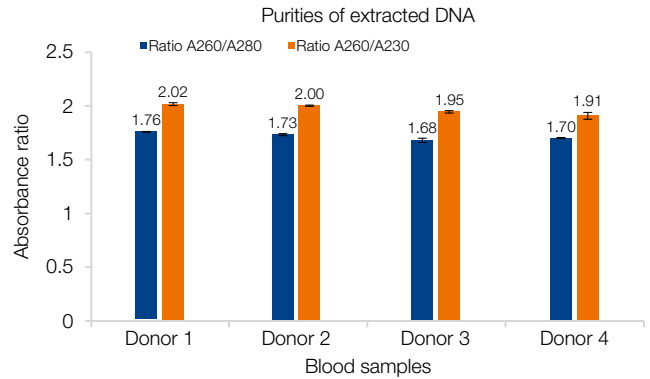
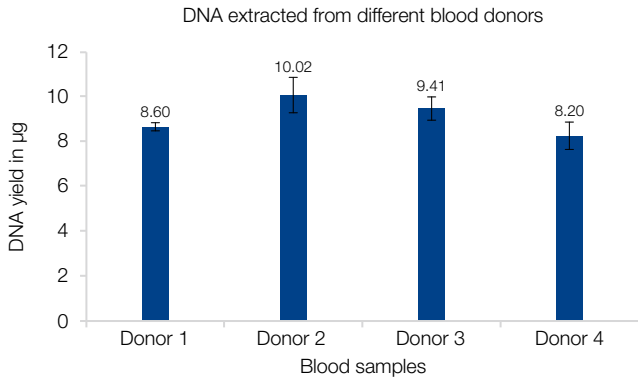
NucleoMag[®] Prefilled Plates

Your trusted partner for magnetic bead-based automation

- Consistent results with precise buffer volumes
- Easy workflow – save time and effort
- Fully compatible with MN extraction robots
- Up to 50 % less plastic consumption

Ready-to-use: Nucleic acid purification made easy!

NucleoMag® Blood 200 µL Prefilled Plates

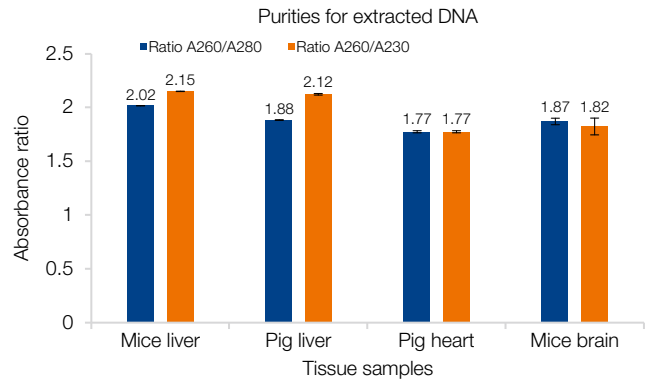
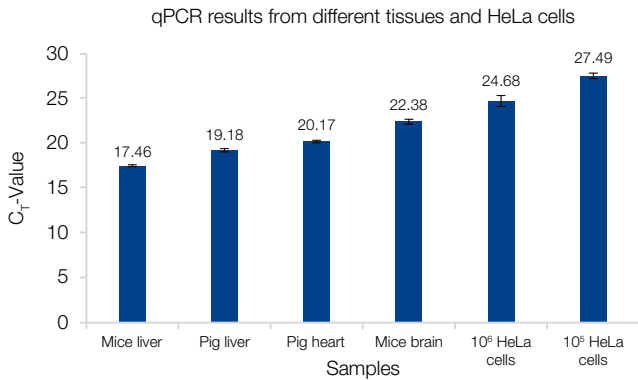


NucleoMag® Blood Prefilled Plates perform consistently across different blood samples

DNA was extracted from human blood samples of four different donors using the NucleoMag® Blood 200 µL Prefilled Plates (n = 4). Yields and purity ratios were determined photometrically and regardless of the donor, results showcase consistent yield, purities and performance during qPCR.

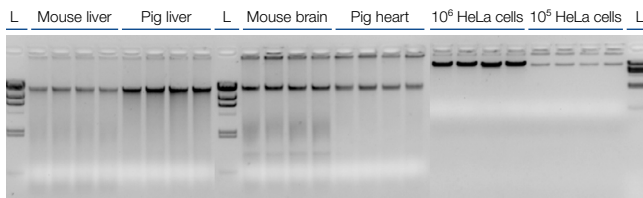


NucleoMag® Tissue Prefilled Plates



Tissue and cell samples (n = 4)
Ladder: λDNA/Hind

Mouse liver: 2 µL eluate Pig Heart: 5 µL eluate
Pig Liver: 2 µL eluate HeLa cells: 25 µL eluate
Mouse Brain: 10 µL eluate

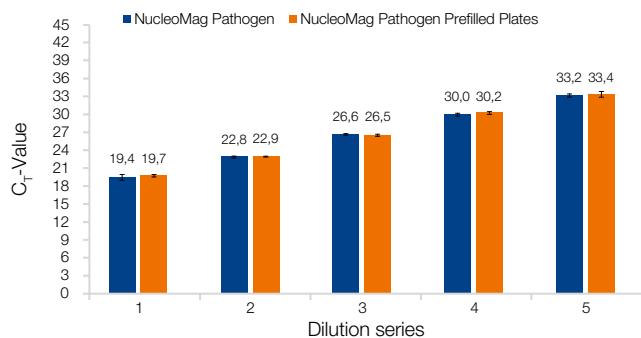


NucleoMag® Tissue Prefilled Plates are capable of extracting DNA from a variety of cells and tissues

Different tissues (10 mg) from mice and pigs and different amounts of HeLa cells were used as sample material for DNA extraction using NucleoMag® Tissue Prefilled Plates (n = 4). Purity ratios were determined photometrically. Due to increased dilution, DNA extracted from HeLa cells was verified along with the other tissue samples through qPCR. The resulting Ct-values showcase reliable qPCR performance and detection for every sample.

Ready-to-use: Nucleic acid purification made easy!

NucleoMag® Pathogen Prefilled Plates

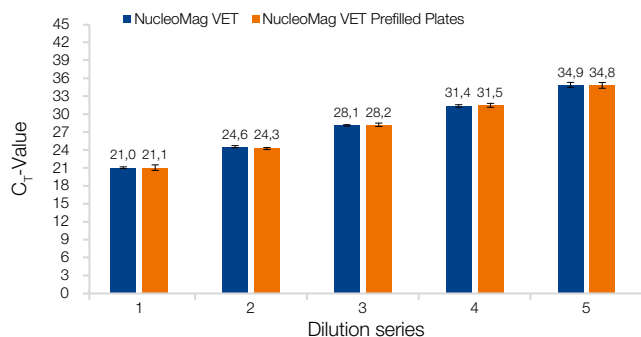


High extraction-performance of NucleoMag® Pathogen Prefilled Plates

Human saliva was used for isolation of bluetongue virus (BTW) in several dilutions with the Nucleomag® Pathogen kit and the new NucleoMag® Pathogen Prefilled Plates. Five different dilution series of BTW (dsRNA) were used for extractions on the NucleoMag® X32 extraction robot. Results show qPCR-data with comparable CT-values demonstrating consistent and reliable detection for both prefilled and freshly prepared plates.



NucleoMag® VET Prefilled Plates



Reliable nucleic acid recovery from low titers with NucleoMag® VET Prefilled Plates

Cattle saliva was used for isolation of porcine enterovirus (PEV) in several dilutions with the NucleoMag® VET Prefilled Plates. Five different dilution series of PEV (ssRNA) were used for extractions on the NucleoMag® X32 extraction robot. Results show qPCR-data with comparable CT-values showing a very consistent and reliable virus detection for both prefilled and freshly prepared plates.

NucleoMag® Prefilled Plates – Technical data

Name	NucleoMag® Blood 200 µL Prefilled Plates	NucleoMag® Tissue Prefilled Plates
Technology	Magnetic bead technology	Magnetic bead technology
Target	Genomic DNA	Genomic DNA
Sample	Whole Blood	Human- and animal tissue, < 10 ⁶ cells
Fragment size	300 bp – approx. 50 kbp	300 bp – approx. 50 kbp
Elution volume	100 µL	100 µL
Processing time	Approx. 30 min run-time (excluding lysis)	Approx. 30 min run-time (excluding lysis)

Name	NucleoMag® Pathogen Prefilled Plates	NucleoMag® VET Prefilled Plates
Technology	Magnetic bead technology	Magnetic bead technology
Target	Bacterial DNA, Viral DNA/RNA	Bacterial DNA, Viral DNA/RNA
Sample	Blood, Human tissue, Cell-free biological fluids, Plasma, Serum, Stool, Swabs	Blood, Animal tissue, Cell-free biological fluids, Plasma, Serum, Stool, Swabs
Fragment size	300 bp – approx. 50 kbp	300 bp – approx. 50 kbp
Elution volume	100 µL	100 µL
Processing time	Approx. 30 min run-time (excluding lysis)	Approx. 30 min run-time (excluding lysis)

Ready-to-use: Nucleic acid purification made easy!

NucleoMag® X32 & IsoPure™ Mini

Our automated magnetic rod extraction platforms are designed for the processing of up to 32 or 16 samples, respectively. The instruments occupy minimal bench space and are easy to set up, program, and operate. Mixing, magnetic bead transfer, washing, and elution steps are all performed automatically.



Other magnetic rod systems compatible with NucleoMag® Prefilled Plates

Device	Distributor	Number of samples
NucleoMag® X32	MN	32
MagnetaPure 32 Plus	Dominique Dutscher	32
Auto-Pure S32	AllSheng	32
MultiEX032	Four E's	32
Vitae	Raykol (XiaMen)	32
IsoPure Mini	Acuris	16
Auto-Pure Mini	AllSheng	16
PurePrep Mini	InnuScreen / MolGen	16
VWR 16 Sample Purification System	VWR	16
Tguide S16	Taingen	16

Ordering information

Product	Preps/Pack of	REF
NucleoMag® Pathogen Prefilled Plates	6 × 16 (96 preps)	744211
NucleoMag® VET Prefilled Plates	6 × 16 (96 preps)	744209
NucleoMag® Blood 200 µL Prefilled Plates	6 × 16 (96 preps)	744510
NucleoMag® Tissue Prefilled Plates	6 × 16 (96 preps)	744302
Related products		
NucleoMag® Pathogen	1 × 96 / 4 × 96 / 100 × 96	744210.1 / .4 / .100
NucleoMag® VET	1 × 96 / 4 × 96 / 100 × 96	744200.1 / .4 / .100
NucleoMag® Blood 200 µL	1 × 96 / 4 × 96	744501.1 / .4
NucleoMag® Tissue	1 × 96 / 4 × 96 / 24 × 96	744300.1 / .4 / .24
NucleoMag® X32*	1	747020
IsoPure™ Mini*	1	747000

*Only available in selected countries, please inquire

www.mn-net.com

MACHEREY-NAGEL



Management System
EN ISO 13485:2016
ISO 9001:2015



www.tuv.com
ID 0000056401

MACHEREY-NAGEL GmbH & Co. KG · Valencienner Str. 11 · 52355 Düren · Germany

DE +49 24 21 969-0 info@mn-net.com

CH +41 62 388 55 00 sales-ch@mn-net.com

FR +33 388 68 22 68 sales-fr@mn-net.com

US +1 888 321 62 24 sales-us@mn-net.com