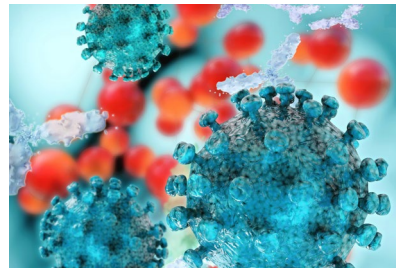


MACHEREY-NAGEL

Pipette+ protocols for NucleoSpin[®] and NucleoBond[®]



OneLab 



Execute MACHEREY-NAGEL protocols in OneLab

- Free up your time and automate your nucleic acid purification
- Improve the reproducibility and tractability of your experiments
- Troubleshoot your experiment directly via OneLab

Bioanalysis

MACHEREY-NAGEL

www.mn-net.com



Execute MACHERY-NAGEL protocols in OneLab






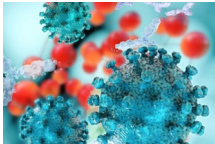


Combine OneLab with NucleoSpin and NucleoBond

Smart nucleic acid purification

MACHERY-NAGEL's NucleoSpin and NucleoBond technology enables rapid and easy nucleic acid purification. By combining this technology with Andrew Alliance OneLab we have made one of the first step to the lab-evolution. OneLab offers you a complete on-screen, step by step guide, through the protocol and allows to track each protocol step. By finishing your experiment a labreport is created allowing you to be always on track of each experiment.

We have started to upload our product highlights to the OneLab library with many more to follow

The following MACHERY-NAGEL kit protocols are available in the OneLab library:

	Product	Protocol name	Preps	REF	
Plasmid DNA purification					
	NucleoBond [®] Xtra Midi	Automated NucleoBond Xtra Midi, 6 Samples with Filter Tips	50,	740410.50/ .100	
		Automated NucleoBond Xtra Midi, 3 Samples	100		
		Automated NucleoBond Xtra Midi, 3 Samples with Filter Tips			
		Automated NucleoBond Xtra Midi, 6 Samples			
	NucleoBond [®] Xtra Midi EF	Automated NucleoBond Xtra Midi EF, 6 Samples	50, 100	740420.50/ .100	
	NucleoBond [®] Xtra Maxi	Guided NucleoBond Xtra Maxi, 4 Samples	50,	740414.50/ .100	
		Guided NucleoBond Xtra Maxi 4 Samples + Desalting Beads	100		
		Desalting of 4 Plasmid Maxi Eluates Using Magnetic Beads			
	NucleoSpin Gel and PCR Clean-up	Plasmid DNA Isolation, 6 samples – Pipette+	50,	740609.50/ .100	
		DNA Extraction from Agarose Gel, 6 Samples – Pipette+	250		
		DNA PCR Clean-up, 6 Samples – Pipette+			
DNA purification					
	NucleoSpin Blood	gDNA Isolation from Blood, 6 Samples	50, 250	740951.50/ .250	
	NucleoSpin Tissue	gDNA Isolation from Cells and Tissue, 6 Samples	50, 250	740952.50/ .250	
	NucleoSpin Soil	gDNA Isolation from Soil, SL ₁ or 2 Lysis, 6 Samples – Pipette +		740780.50/ .250	
		gDNA Isolation from Soil, SL ₁ or 2, Enhancer SX, 6 Samples – Pipette +			
	NucleoSpinPlant	gDNA Isolation from Plant, PL ₁ Lysis 6 Samples – Pipette+	50,	740770.50/ 250	
	gDNA Isolation from Plant, PL ₂ Lysis 6 Samples – Pipette+	250			
	NucleoSpin Food	gDNA Isolation from Food, 6 Samples – Pipette+		740945.50/ 250	
RNA purification					
	NucleoSpin RNA Virus	Viral RNA Isolation, 6 Samples	50, 250	740956.50/ .250	
	NucleoSpin RNA	NucleoSpin RNA, 6 samples – Pipette+	50,		740955.50/ 250
	NucleoSpin RNA Plus	NucleoSpin RNA Plus, 6 Samples – Pipette+	250		

www.mn-net.com

MACHERY-NAGEL



MACHERY-NAGEL GmbH & Co. KG
Valenciener Str. 11
52355 Düren · Germany

DE Tel.: +49 24 21 969-0 info@mn-net.com
CH Tel.: +41 62 388 55 00 sales-ch@mn-net.com
FR Tel.: +33 388 68 22 68 sales-fr@mn-net.com
US Tel.: +1 888 321 62 24 sales-us@mn-net.com