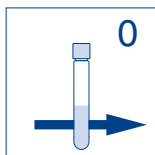


visicolor® ECO Sulfat

Sulphate / Sulfate / Sulfato

Method(e) / Método

5921 20–200 mg/L SO_4^{2-} PF-12
436 nmPF-12^{Plus}
436 nmAdvance
436 nm

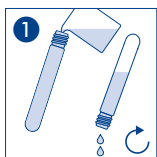
Null mit Probe
Blank with sample
Blanc avec échantillon
En blanco con muestra

Bei geeigneter Verdünnung in den Messbereich auch zur Bestimmung von Sulfat in Meerwasser geeignet.

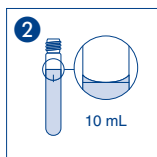
Also suitable for the determination of sulfate in seawater with appropriate dilution in the measuring range.

En cas de dilution appropriée dans la plage de mesure, convient également pour la détermination du sulfate dans l'eau de mer.

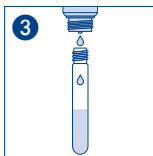
También es adecuado para la determinación de sulfato en agua de mar cuando se diluye adecuadamente en el intervalo de medida.



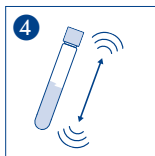
Küvetten spülen
Rinse test tube
Rincer les éprouvettes
Lavar los tubos



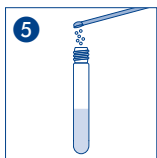
Probe
Sample
Echantillon
Muestra



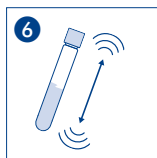
10 SO_4 -1



Schütteln
Shake
Agiter
Agitar



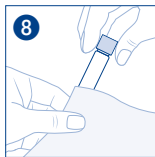
1 SO_4 -2



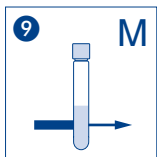
Schütteln
Shake
Agiter
Agitar



Warten
Wait
Attendre
Espere



Säubern
Clean
Nettoyer
Limpiar



Messung
Measurement
Mesure
Medición