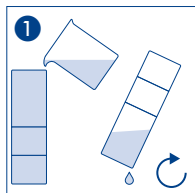




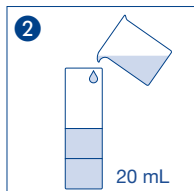
# visicolor® ECO Sulfat

Sulphate / Sulfate / Sulfato

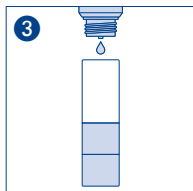
Messbereich / Range / Domaine de mesure / Rango  
25 – 200 mg/L  $\text{SO}_4^{2-}$



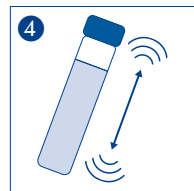
Spülen  
Rinse  
Rincer  
Lavar



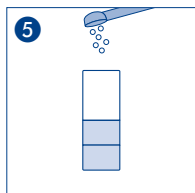
Probe  
Sample  
Echantillon  
Muestra



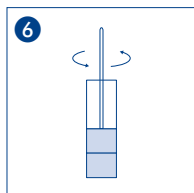
10 Δ  $\text{SO}_4^{-1}$



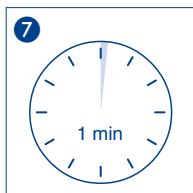
Umschwenken  
Shake gently  
Secouer légèrement  
Mezclar volteándolo



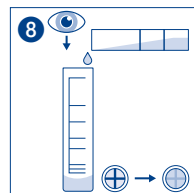
1  $\text{SO}_4^{-2}$



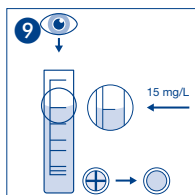
Umrühren  
Stir  
Remuer  
Revolver



Warten  
Wait  
Attendre  
Espere



Messröhrchen füllen  
Filling measuring tube  
explétif la cuve de mesure  
echar en tubito de medida



bis Kreuz unsichtbar  
till cross invisible  
jusque croix invisible  
hasta cruz invisible

Bei geeigneter Verdünnung in den Messbereich auch zur Bestimmung von Sulfat in Meerwasser geeignet.

Also suitable for the determination of sulfate in seawater with appropriate dilution in the measuring range.

En cas de dilution appropriée dans la plage de mesure, convient également pour la détermination du sulfate dans l'eau de mer.

También es adecuado para la determinación de sulfato en agua de mar cuando se diluye adecuadamente en el intervalo de medida.

