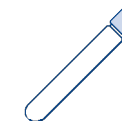


NANOCOLOR® Härte 20

Hardness 20 / Dureté 20 / Durezza 20



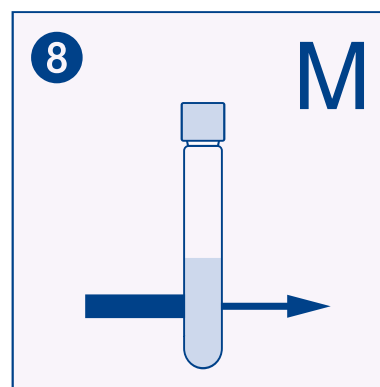
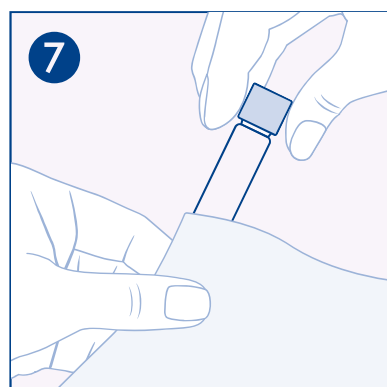
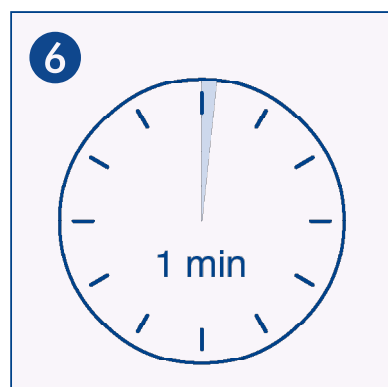
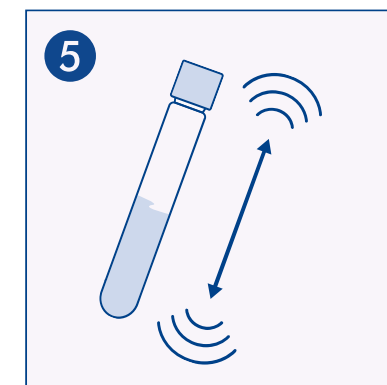
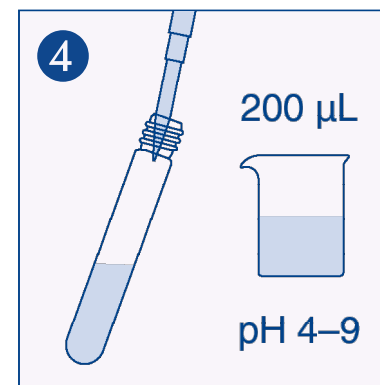
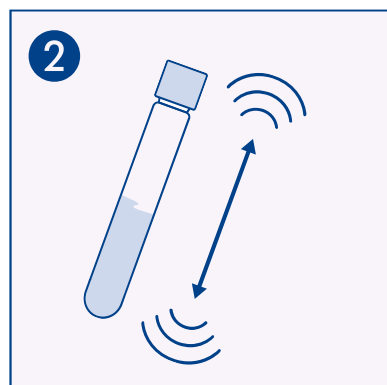
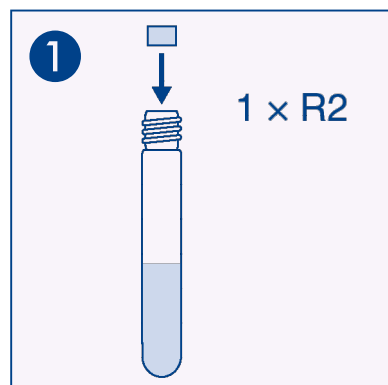
Test 0-43
REF 985043

Methode / Method / Méthode / Método

- 0431 1–20 °d
- 0432 0.2–3.6 mmol/L
- 0433 1.0–25.0 °e
- 0434 2.0–36.0 °f
- 0437 20–350 mg/L CaCO₃

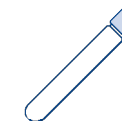
540/570 nm

Min	20–80 %	Max
1	4.8 15.2	20 °d



NANOCOLOR® Härte 20

Hardness 20 / Dureté 20 / Durezza 20



Test 0-43
REF 985043

Methode / Method / Méthode / Método

0435 10–100 mg/L Ca

0436 5–50 mg/L Mg

540 / 570 nm

Min	20–80 %		Max
10	28	82	100 mg/L Ca
5	14	45	50 mg/L Mg

